

<div>Product type:</div> <div>Product:</div> <div>Total qty:</div> <div>Product colors:</div> <div>Position:</div>	<div>Terms and Conditions:</div>	<div>Approved By:</div> <div></div> <div>Date:</div>
--	----------------------------------	--

Production Worksheet

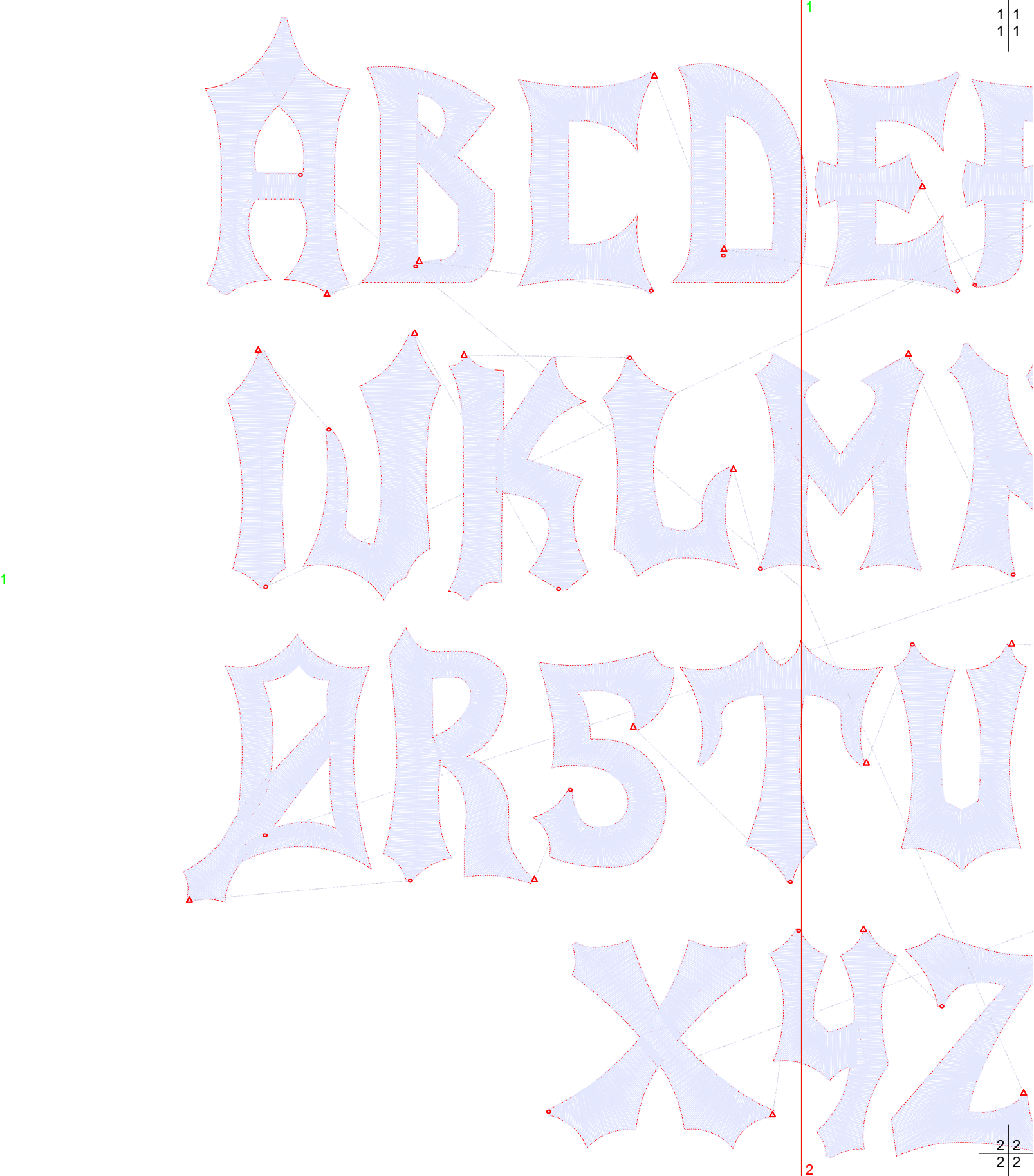
EmbroideryStudio 2025 - Designing

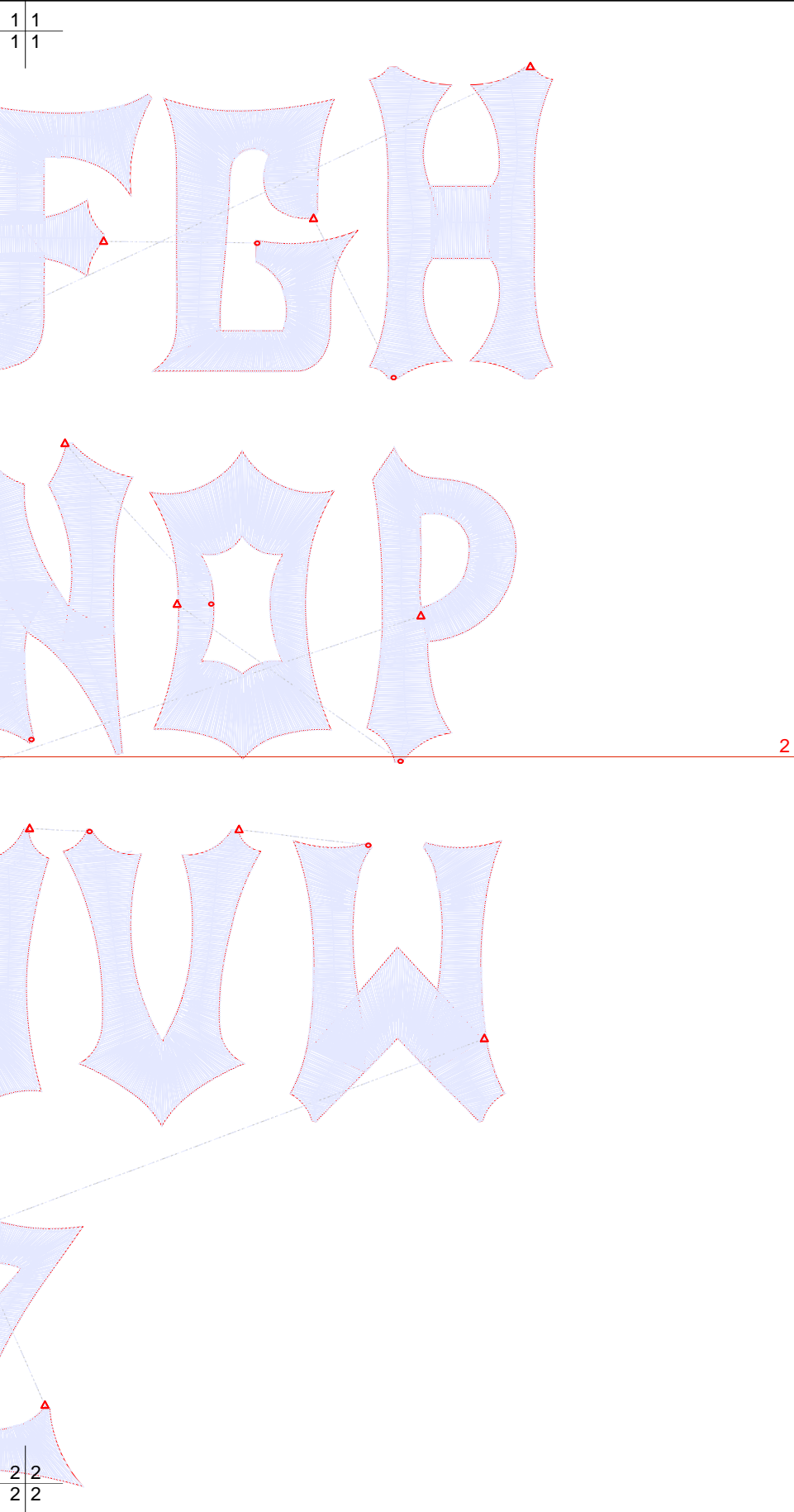
\*HALLOWEEN FONT - LEFT CHEST - BIG\*

Design: Halloween Font - Left Chest - Big


Title:

Stitches:	48.556
Height:	9.22 in
Width:	10.01 in
Colors:	1
Colorway:	Colorway 1
Zoom:	1:1





Machine format:	Tajima
Color changes:	0
Stops:	1
Trims:	26
Fabric:	Pure Cotton
Required stabilizer:	Topping: Backing: Tear Away x 2
Appliqués:	0
Left:	127.2 mm
Right:	127.2 mm
Up:	117.1 mm
Down:	117.1 mm
EndX:	0.00 in
EndY:	0.00 in
Area	92.34 in²
Max stitch:	11.0 mm
Min stitch:	0.0 mm
Max jump:	7.0 mm
Total thread:	1098.87ft
Total bobbin:	462.18ft

Stop Sequence:						
#	N#	Color	St.	Code	Name	Chart
1.	1		48.554	1801	Madeira	PolyNeon 40




Color Film

EmbroideryStudio 2025 - Designing

\*HALLOWEEN FONT - LEFT CHEST - BIG\*

Design: Halloween Font - Left Chest - Big

Title:

Stitches:	48.556	
Height:	9.22 in	
Width:	10.01 in	
Colors:	1	
Colorway:	Colorway 1	
Zoom:	0.19	



Color: 1  
Stop: 1  
Element:  
Code: 1801  
Name:  
Chart: Madeira PolyNeon 40  
Stitches: 48.554  
Thread used: 1098.53ft